

# ASSEMBLY MANUAL



## REARSETS GSXR 1000 2017-2020

[www.avdb-moto.com](http://www.avdb-moto.com)

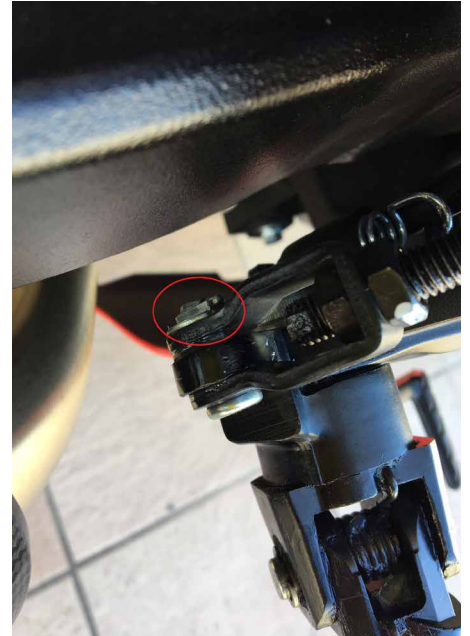
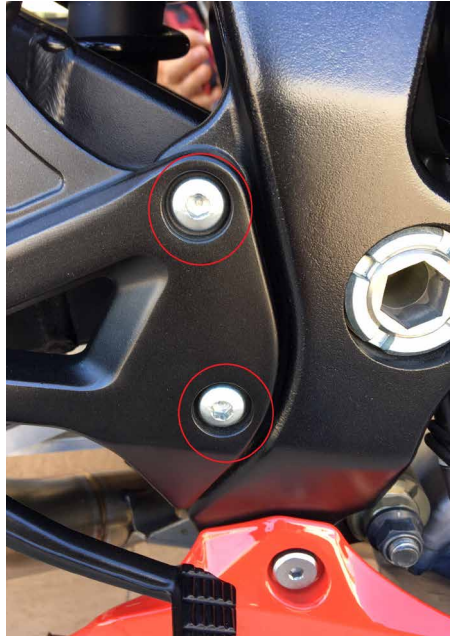
# avdb

## REARSETS GSXR 1000 2017-2020



## **BRAKE PEDAL SIDE**

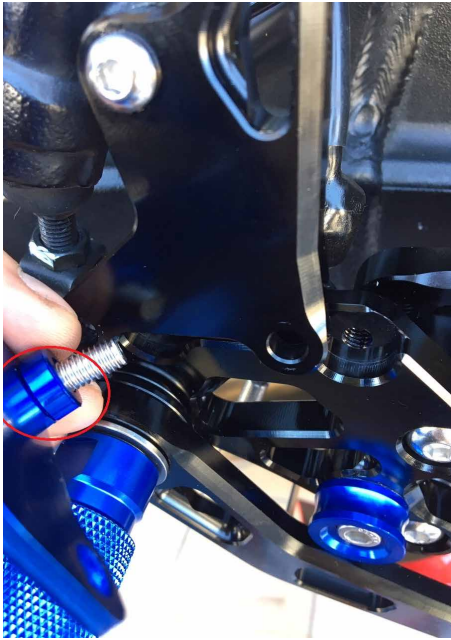
**1.** Remove the fixing screws maintaining the brake master cylinder, the axle holding it to the pedal, and the fixing screws of the original footrest bracket (the axle holding the master cylinder to the pedal holds with a pin)



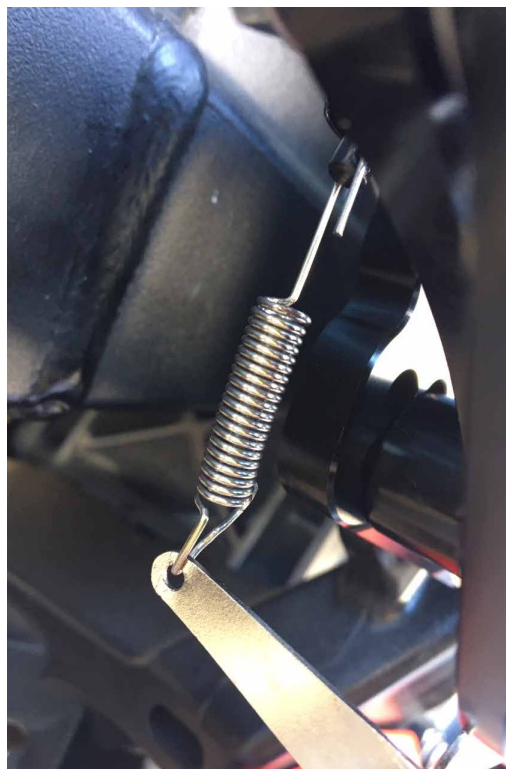
**2.** Attach the new pedal to the master cylinder using the new axle supplied with the rearsets, and using its screw and circlip. Insert the spring rod at the same time (see photo on the right).



**3.** Re-install the master cylinder to the rearsets' bracket, the bracket to the frame, and the heel guard to the bracket with the supplied spacers.



**4.** Then fix the spring and adjust its length according to your motorcycle.

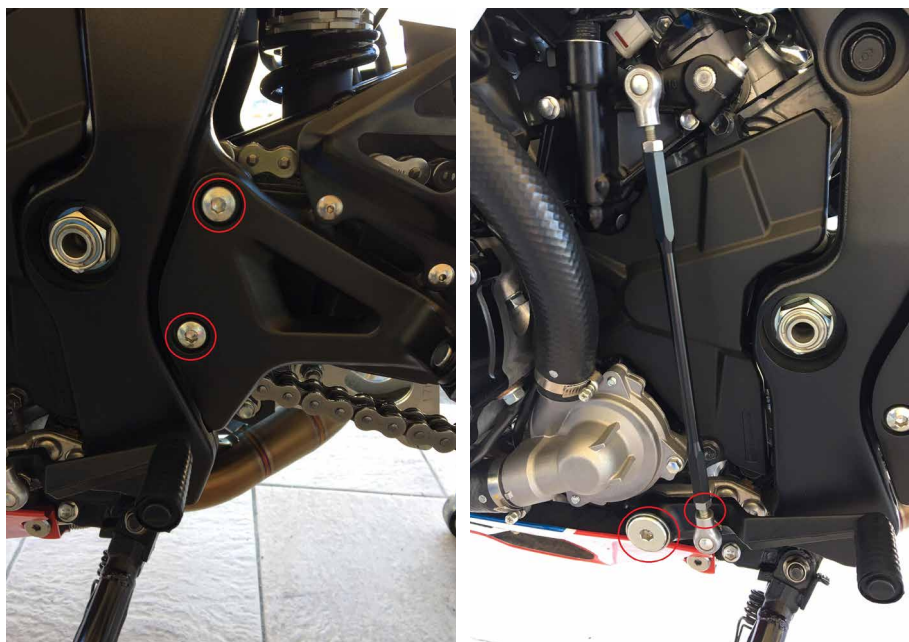


## GEAR SHIFT SIDE

**1.** Dismantle your original footrest bracket and your original gear shift.

To detach the gear shift from the rod, simply loosen the lock nut and unscrew the ball joint.

(Caution, this is a inverted thread).



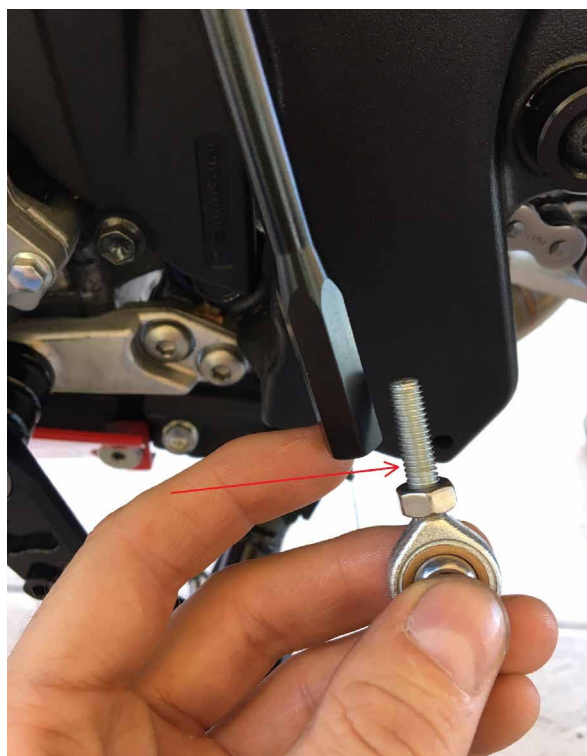
**2.** Fasten the rearsets' bracket with the supplied black screws.



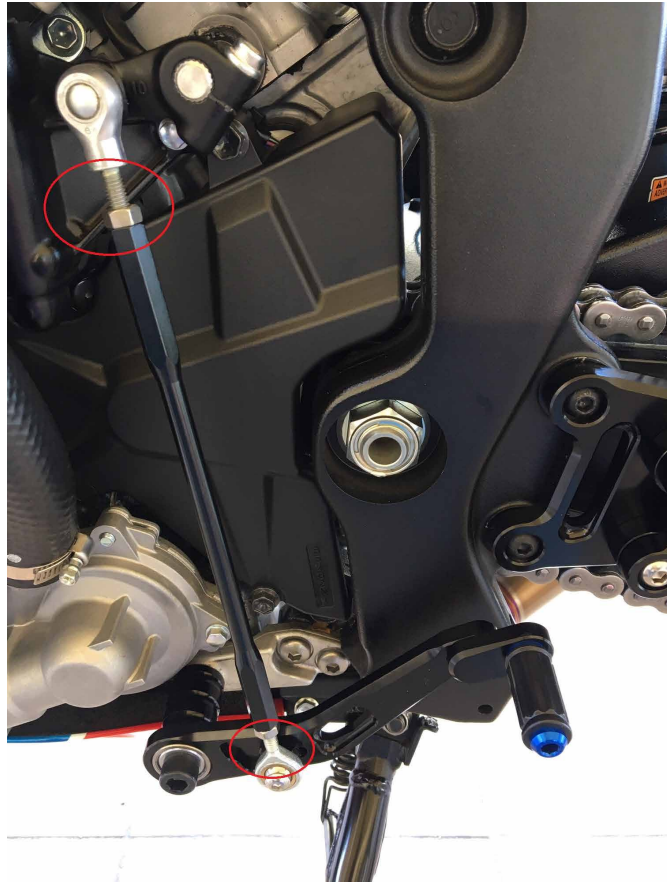
**3.** / Fix the new gear shift in place of the original one using the big BTR/Allen screw and the big spacer supplied with the kit (put the edge of the spacer on the bearing's side).



**4.** Screw the new ball joint into the rod. (Caution: use the model with inverted thread as shown on the picture). Attach the ball joint to the gear shift pedal using the screw and the small black spacer provided with the kit, between the ball joint and the gear shift.



**5.** When adjusting the height of the gear shift lever, ensure that both ball joints are unscrewed approximately equally.



## **CAUTION**

**1 / It is very important to adjust your gear shift lever's height using the 2 rods' ball joint's threads, according to your morphology and the position of the gears (normal or reverse).**

**2 / All screws connections must be secured with a liquid locking agent such as "Loctite".**