

ASSEMBLY MANUAL



REARSETS' AVDB
CBR 600 RR 2007-17

www.avdb-moto.com

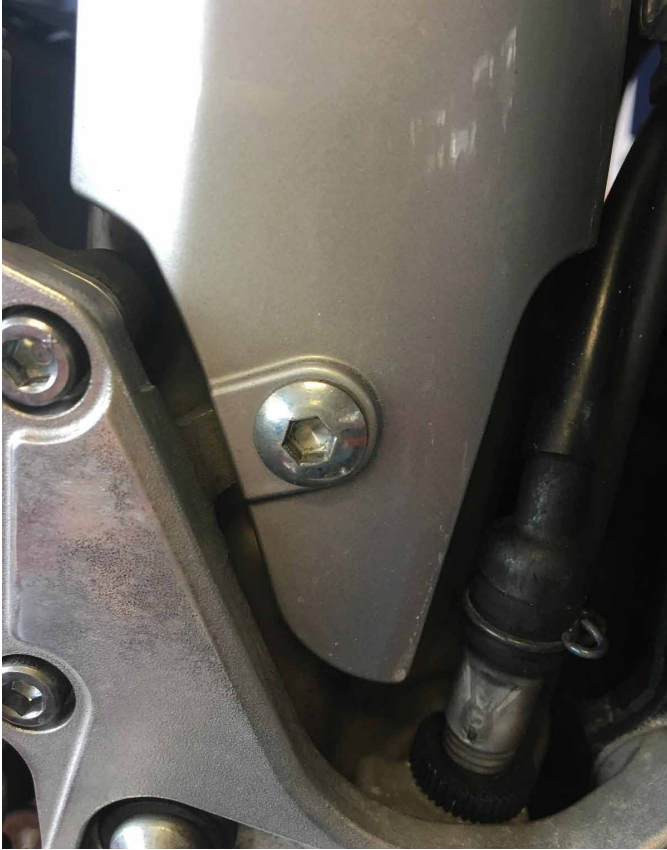
avdb

**REARSET'S AVDB
CBR 600 RR 2007 -2017**



BRAKE PEDAL SIDE

1. Uninstall the exhaust's plastic protection by unscrewing its Allen screw and dismantling the upper part.



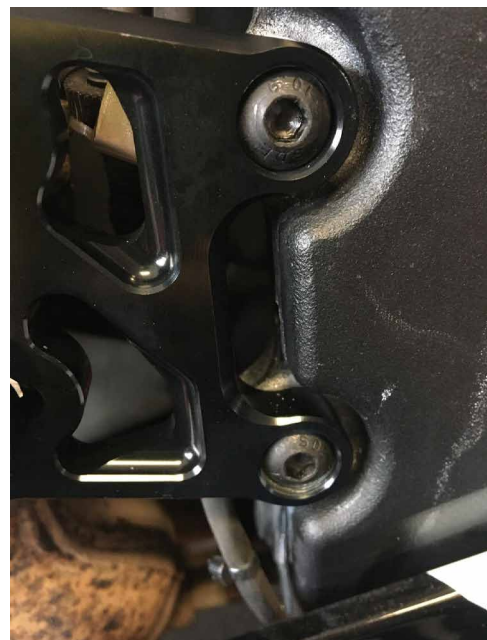
2. Disconnect the footrest bracket from the rear brake master cylinder (MC) by unscrewing the screw and nut holding the pedal to the MC (caution, there is a cotter pin), by unscrewing the 2 Allen screws holding the heel protector and the fixing screw of the aluminium guard (2 allen screws).



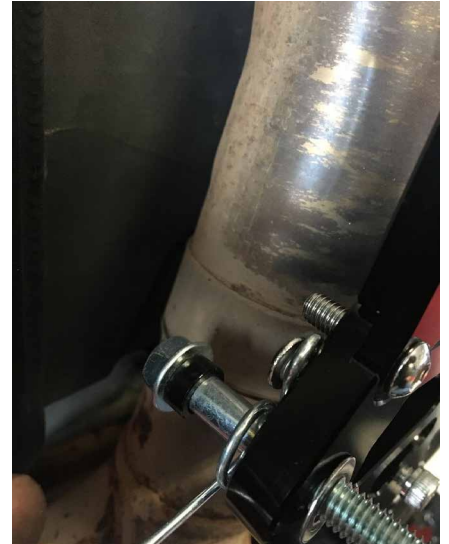
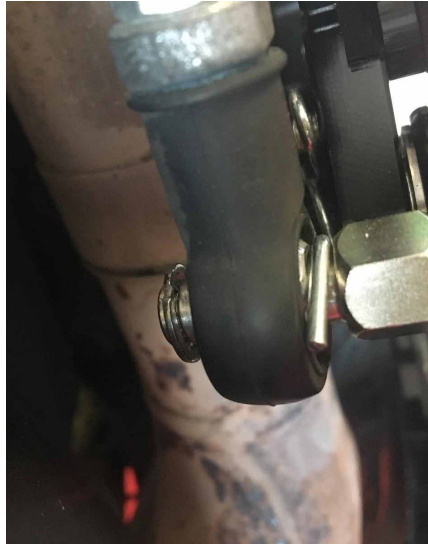
3. Disconnect the footrest bracket from the frame by unscrewing the 2 allen screws



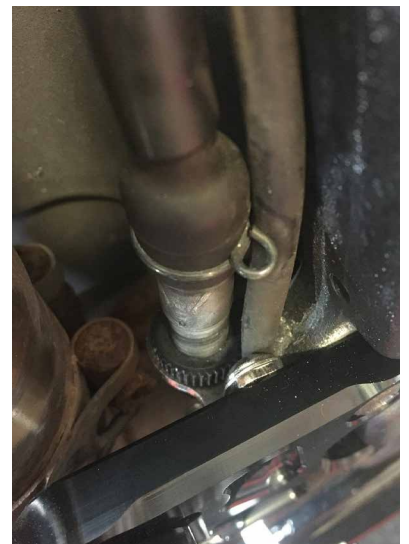
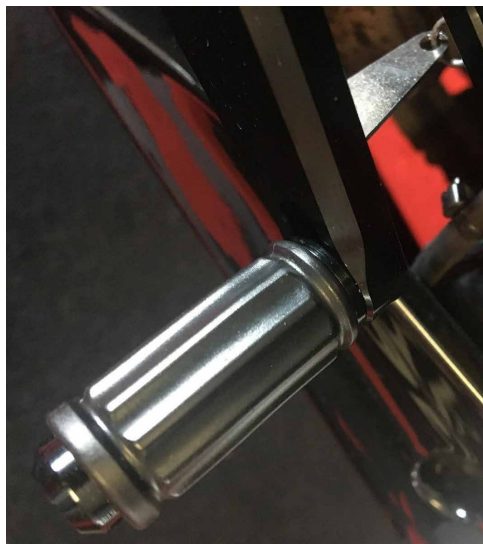
4. Install the new bracket with the supplied allen screws



5. Reinstall the rear brake master cylinder with the supplied 2 allen screws for the upper part, and the axle and clip for the ball joint part (make sure to properly position the spring allowing the brake pedal to return). When installing the brake pedal, make sure that the washer between the bracket and the bearing is properly positioned, namely the rounded edge must be towards the bearing side.



6. Install the footrest, and make sure to put the black conical spacer between the footrest and the bearing. Install the pedal tip and brake switch in their intended location.

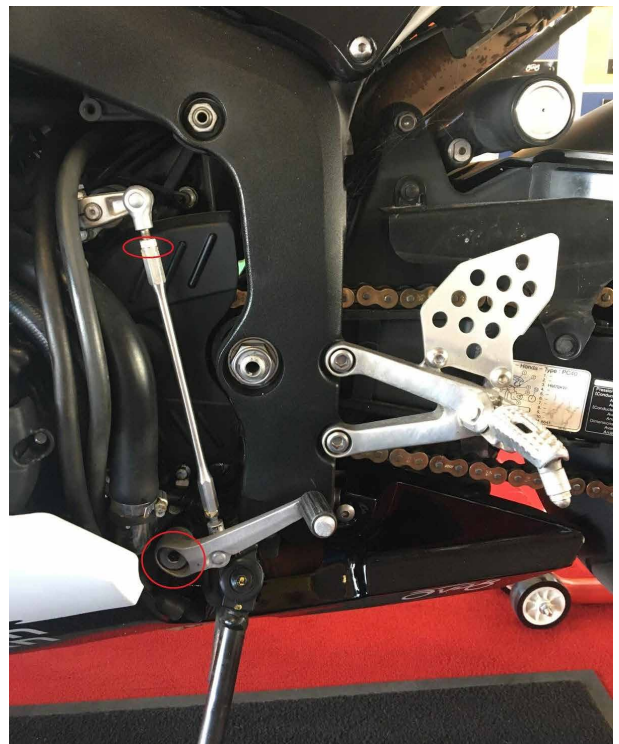


It is imperative to fix the brake fluid reservoir's hose to the brake hose coming from the MC with the nylon collar.



GEAR SHIFT SIDE

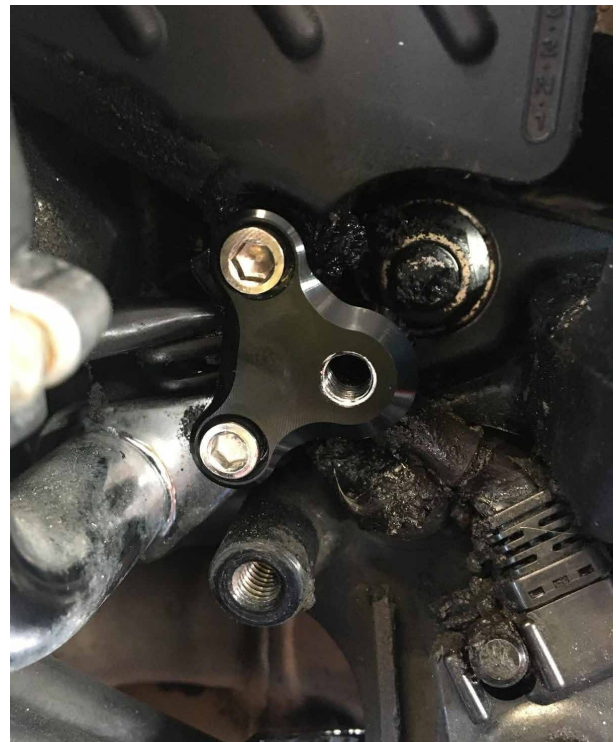
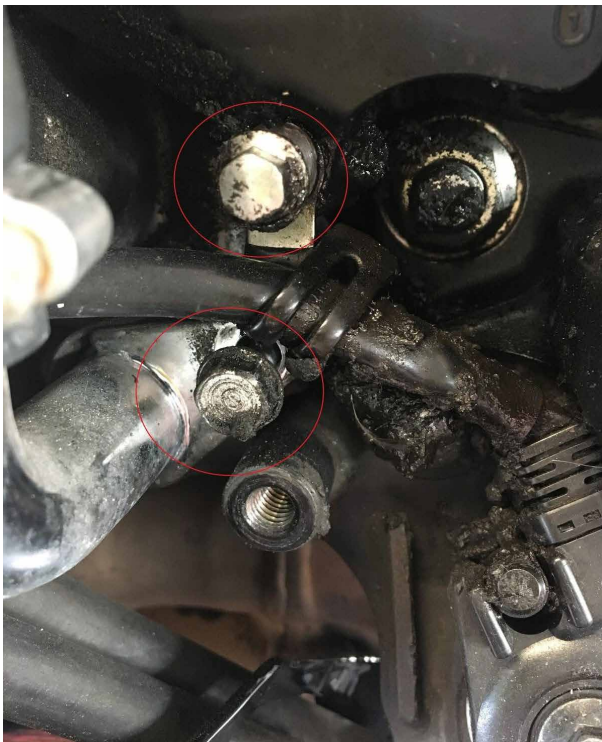
1. Remove the original foot rests bracket by unscrewing the maintaining 2 allen screws, and dismantle the gear shift lever by unscrewing the large allen screw and the upper lock nut on the ball joint. The gear shift lever and gear shift rod will unscrew together as a whole.



2. *Fasten the new bracket with the screw supplied with our kit*

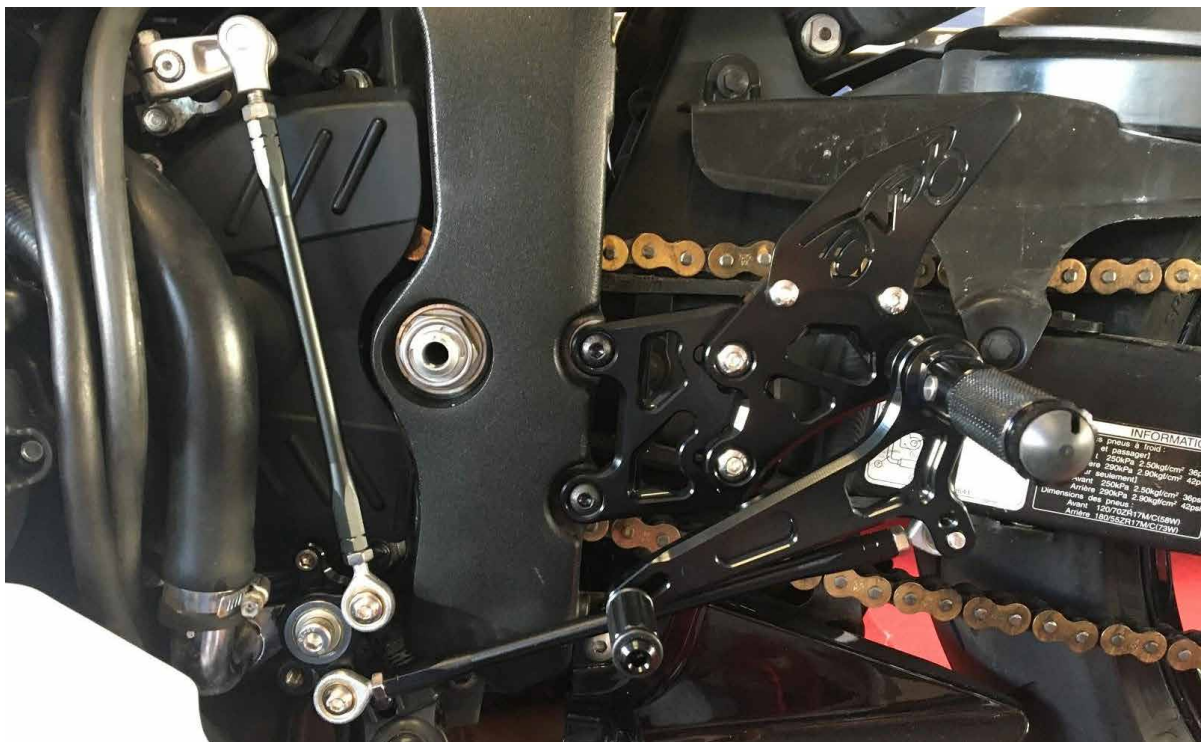


3. *Uninstall the screw fixing the steel coolant hose and the screw fastening the gearbox pinion cover, then fix the pivot bracket with the screws provided with our rearsets (be careful that the clamp holding the kickstand switch cable must remain between the bracket and the PS housing). Attach the pivot using the long spacer and the allen screw provided.*





4. Attach the long rod with the supplied ball joints to the gear shift pedal and to the pivot, and fasten the short rod to the original pivot and ball joint remaining on the bike.



CAUTION

1/ 1. It is very important to adjust the height of the gear shift side thanks to the 2 gear shift rods, depending on your size and gears' position (normal or inverted)

2/ All threads must be secured with a blocking agent, such as "Loctite"