

ASSEMBLY MANUAL



AVDB REARSETS GSR 750

www.avdb-moto.com

avdb

AVDB REARSETS GSR 750



GEAR SHIFT LEVER SIDE

1. Uninstall the counter-nuts holding the gear shift rod in order to then unscrew it from the ball joints



2. Unscrew the original bracket (3 allen screws)



3. Install the rearsets' bracket using the supplied screws

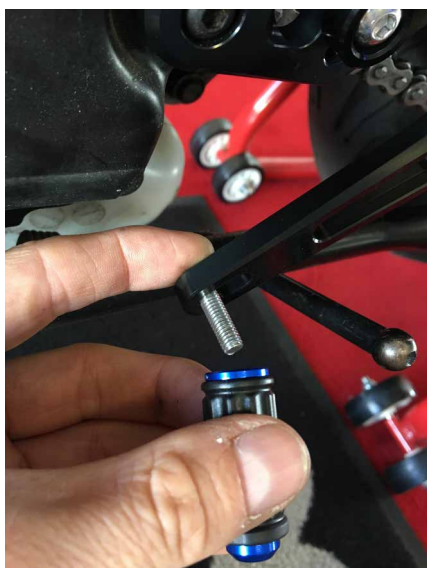


4. Install the Gear shift lever and Footpeg assembly

(Caution, the black spacer will install with the small offset on the bearing's side)



5. Fasten the gear shift lever's tip



6. Screw the gear shift rod on the original ball joint, on the gear shaft side



7. Fasten the gear shift rod's ball joint on the gear shift lever

Don't forget to use the supplied spacer between the ball joint and the gear shift lever

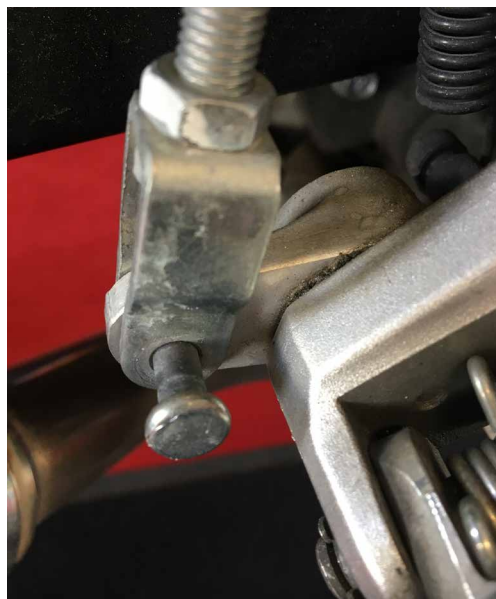


8. Install the heel protector using the small allen screws supplied with the rearsets

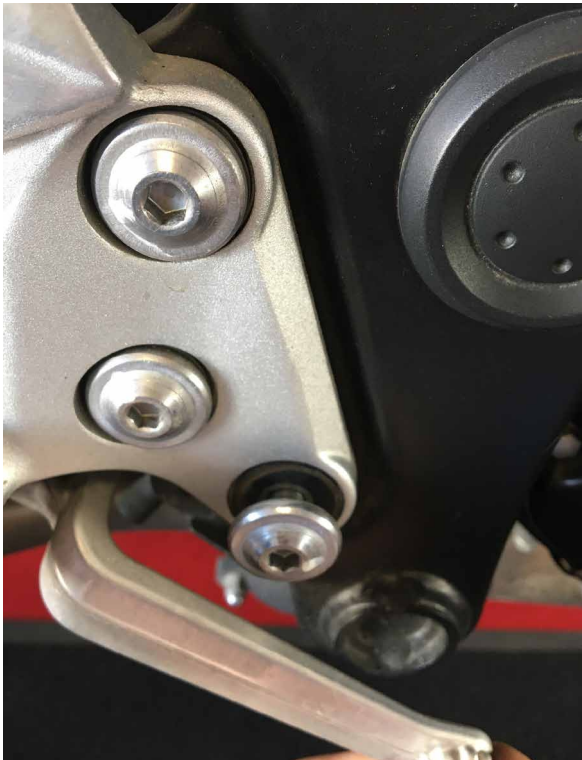


BRAKE PEDAL SIDE

1. Dismantle the connecting pin between the brake pedal and the master cylinder



2. Uncouple the master cylinder from the original foot peg's bracket and dismantle the bracket from the frame



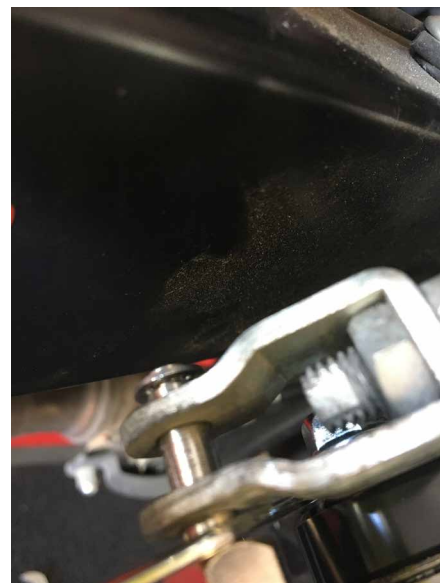
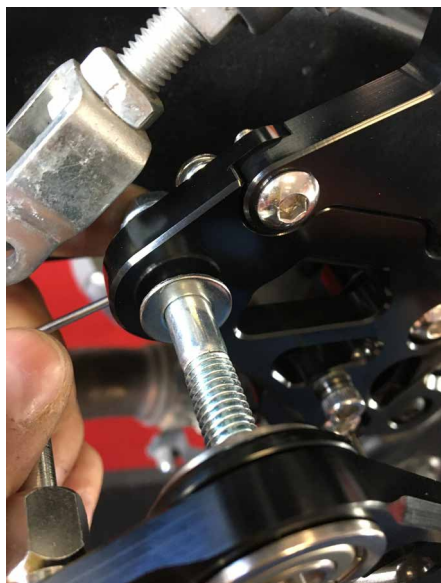
3. Install the rearsets' bracket using the supplied screws



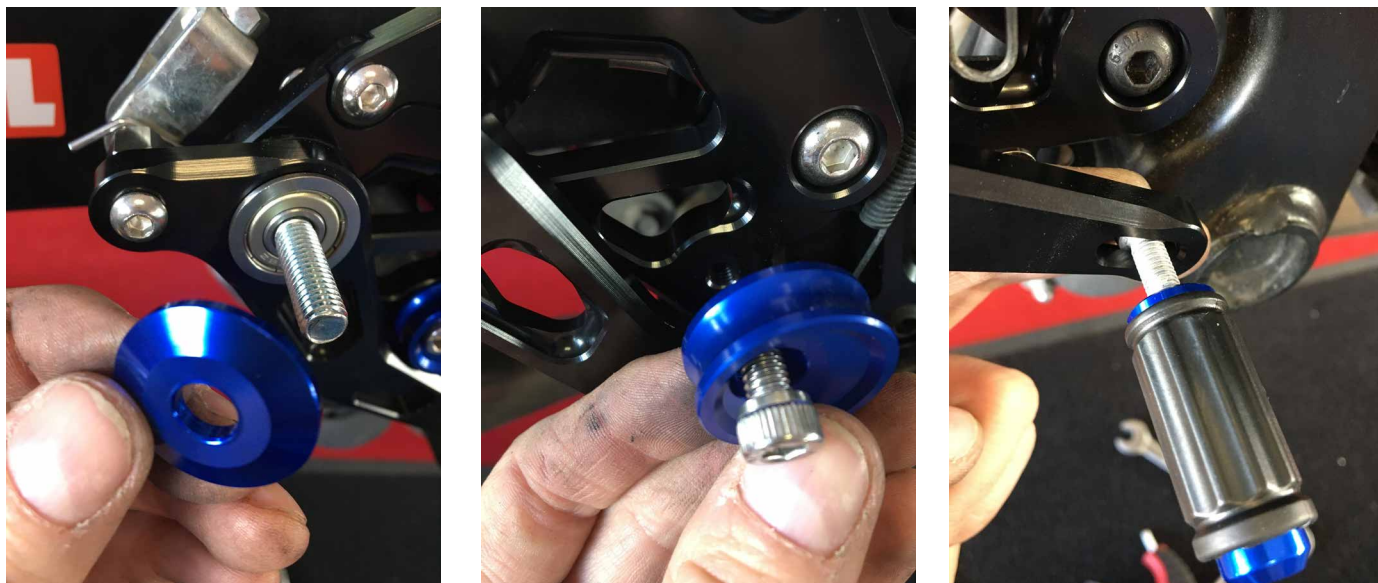
4. Dismantle the rear brake fluid reservoir in order to move its position afterwards.



5. Install the brake pedal by also installing the return spring rod on the axle that slides into the brake master cylinder. The washer is mounted with rounded edge on the bearing side.



6. *Install the footrest, the eccentric pedal stop and the gear shift lever's tip.*

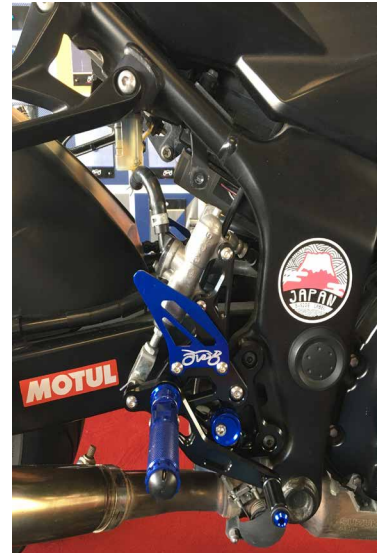


7. *Install the heel protector and the brake switch spring, using the supplied screws and spacers (the brake switch spring is a universal part you will need to recut at the right length in order to install it)*



8. Attach the fluid reservoir using the supplied aluminium bracket, which you will need to shape according to the chosen location (in this case, the screw fixing the regulator bracket).

You will also have to rotate the hose (do not disassemble it!).



CAUTION

1/ It is very important to adjust the height of the gear shift side thanks to the 2 gear shift rods, depending on your size and gears' position (normal or inverted)

2/ All threads must be secured with a blocking agent, such as "Loctite"